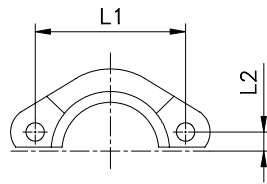


## SAE SPLIT - FLANGE CLAMPS 3000 PSI SERIES - SAE J518

Code: **8056..**  
 Type: **FL**

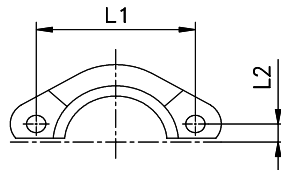


CODE	Ø flange	L1	L2
805601	1/2	38,1	8,7
805602	3/4	47,6	11,1
805603	1	52,4	13,1
805604	1 1/4	58,7	15,1
805605	1 1/2	69,9	17,8
805606	2	77,8	21,4

**Notes:** If you wish to order a fitting in stainless steel, please change the first two digit from **80....** to **81....** .

## SAE SPLIT - FLANGE CLAMPS 6000 PSI SERIES - SAE J518

Code: **8057..**  
 Type: **FS**



CODE	Ø flange	L1	L2
805701	1/2	40,5	9,1
805702	3/4	50,8	11,9
805703	1	57,2	13,9
805704	1 1/4	66,7	15,9
805705	1 1/2	79,4	18,2
805706	2	96,8	22,2

**Notes:** If you wish to order a fitting in stainless steel, please change the first two digit from **80....** to **81....** .